



Anne Arundel County
Commuter Inflow/Outflow Report
2020

July 17, 2023

Anne Arundel Economic Development Corporation

2660 Riva Road

Annapolis, MD 21401

This page is intentionally blank.

Executive Summary

In April of 2023, the U.S. Census Bureau's Local Employment Dynamics (LED) Partnership released the 2020 employment data from the Longitudinal Employer-Household Dynamics (LEHD) program. This data consists of statistics on employment, earnings, and job flows for many levels of geography, demographics, and industry. The data is collected from various sources including Unemployment Insurance (UI), Bureau of Labor Statistics (BLS) Quarterly Census of Employment and Wages (QCEW), and Office of Personnel Management (OPM) records. Of note, the OPM data excludes civilian employees of the Department of Defense and the Armed Forces, as well as some other federal employment jobs. The data only includes information that meets the U.S. Census Bureau's publication standards.

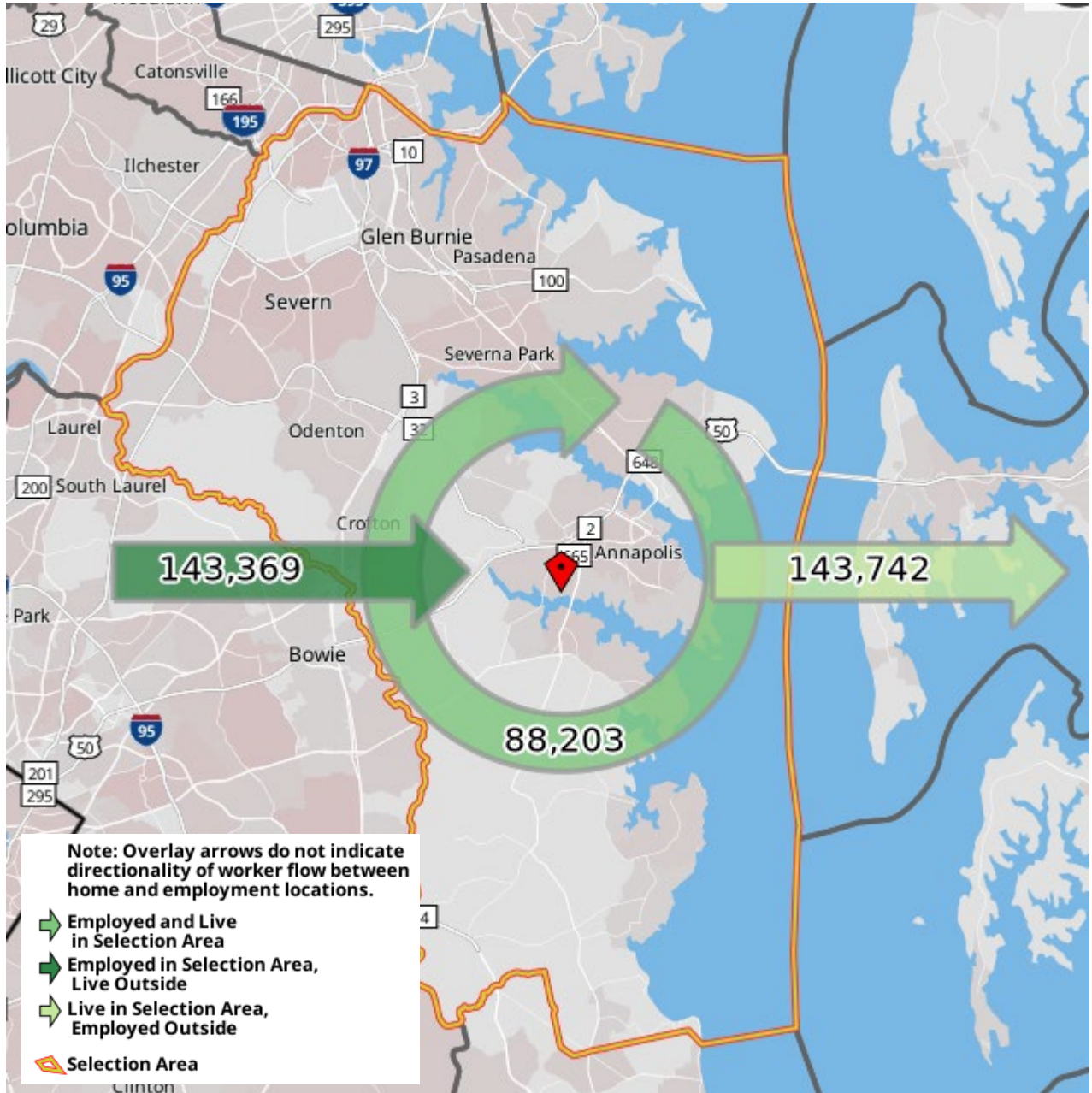
The LEHD data is made publicly available through the U.S. Census Bureau webtool "On The Map" [[OnTheMap \(census.gov\)](https://onthemap.census.gov)]. This tool allows users to access and map the data points and provides detailed reports of the data. For this report, the selected geography was Anne Arundel County. The data was further filtered to include only primary jobs (excluding part-time jobs) in both the government and private sector.

Below are some of the key findings:

- An almost equal number of workers commute into (61.9%) Anne Arundel County as out (62%) of for employment. Those that both live and work in Anne Arundel County account for 38.1% of workers.
- Of the more than 230,000 primary jobs included and located in Anne Arundel County, 8.3% are filled by workers commuting from Baltimore City, 5.3% from workers living in Glen Burnie, and 3.2% from workers living in the City of Annapolis.
- The top four places Anne Arundel County residents commute to for employment are Baltimore City (10.5%), Parole (6.5%), Washington D.C. (5.7%), and the City of Annapolis (4.8%).

Of note, more than 63,000 workers are employed at Fort Meade by the military and Department of Defense civilian government agencies/organizations. The vast majority of them are not included in the U.S. Census Bureau's datasets due to national security concerns.

Commuter Inflow/Outflow for Anne Arundel County in 2020



Selection Area Labor Market Size (Primary Jobs)

	2020	
	Count	Share
Employed in the Selection Area	231,572	100.0%
Living in the Selection Area	231,945	100.2%
Net Job Inflow (+) or Outflow (-)	-373	-

In-Area Labor Force Efficiency (Primary Jobs)

	2020	
	Count	Share
Living in the Selection Area	231,945	100.0%
Living and Employed in the Selection Area	88,203	38.0%
Living in the Selection Area but Employed Outside	143,742	62.0%

In-Area Employment Efficiency (Primary Jobs)

	2020	
	Count	Share
Employed in the Selection Area	231,572	100.0%
Employed and Living in the Selection Area	88,203	38.1%
Employed in the Selection Area but Living Outside	143,369	61.9%

Outflow Job Characteristics (Primary Jobs)

	2020	
	Count	Share
External Jobs Filled by Residents	143,742	100.0%
Workers Aged 29 or younger	26,672	18.6%
Workers Aged 30 to 54	80,088	55.7%
Workers Aged 55 or older	36,982	25.7%
Workers Earning \$1,250 per month or less	19,908	13.8%
Workers Earning \$1,251 to \$3,333 per month	26,650	18.5%
Workers Earning More than \$3,333 per month	97,184	67.6%
Workers in the "Goods Producing" Industry Class	16,903	11.8%
Workers in the "Trade, Transportation, and Utilities" Industry Class	28,856	20.1%
Workers in the "All Other Services" Industry Class	97,983	68.2%

Inflow Job Characteristics (Primary Jobs)

	2020	
	Count	Share
Internal Jobs Filled by Outside Workers	143,369	100.0%
Workers Aged 29 or younger	32,815	22.9%
Workers Aged 30 to 54	75,651	52.8%
Workers Aged 55 or older	34,903	24.3%
Workers Earning \$1,250 per month or less	28,073	19.6%
Workers Earning \$1,251 to \$3,333 per month	33,387	23.3%
Workers Earning More than \$3,333 per month	81,909	57.1%
Workers in the "Goods Producing" Industry Class	22,395	15.6%
Workers in the "Trade, Transportation, and Utilities" Industry Class	37,248	26.0%
Workers in the "All Other Services" Industry Class	83,726	58.4%

Interior Flow Job Characteristics (Primary Jobs)

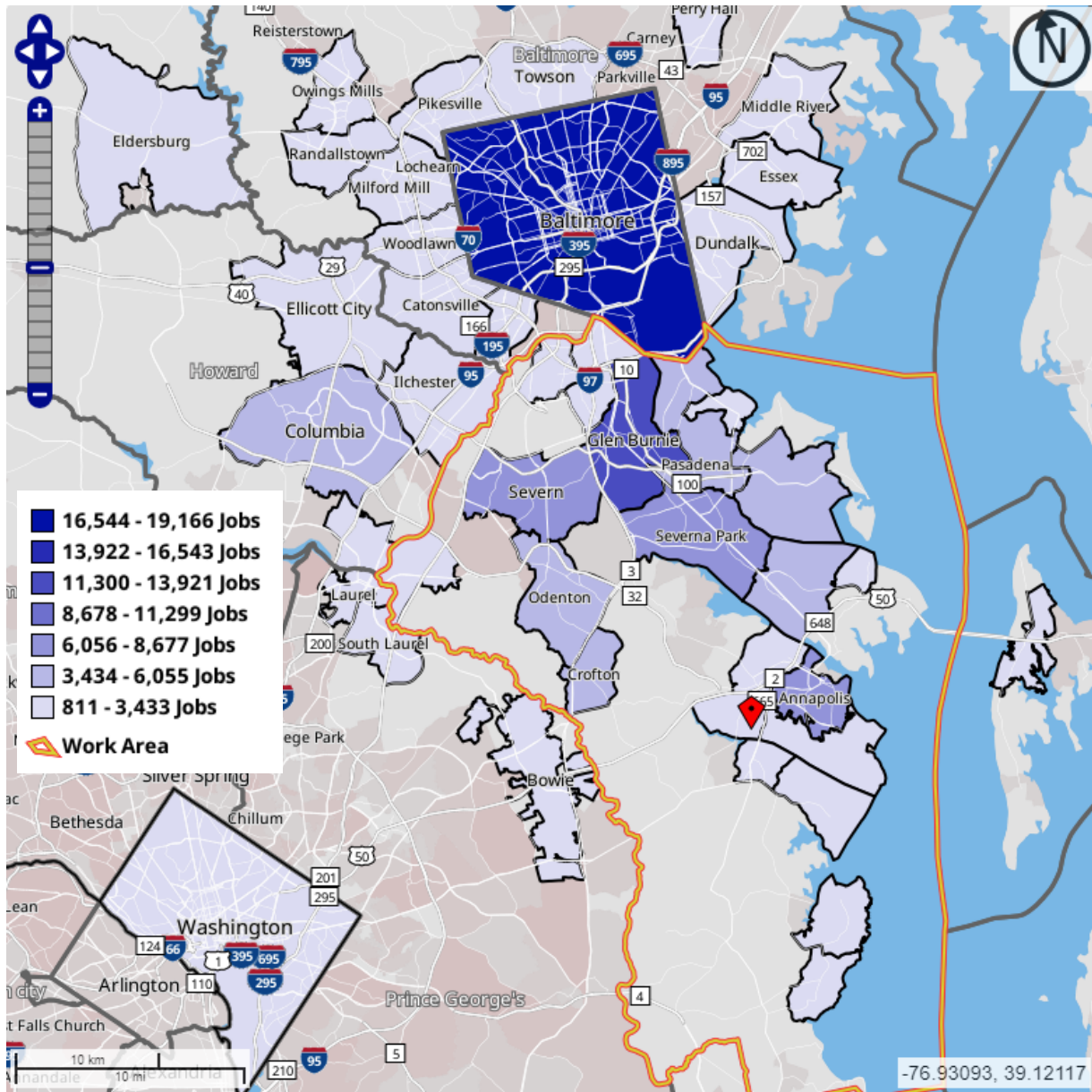
	2020	
	Count	Share
Internal Jobs Filled by Residents	88,203	100.0%
Workers Aged 29 or younger	20,020	22.7%

Workers Aged 30 to 54	44,411	50.4%
Workers Aged 55 or older	23,772	27.0%
Workers Earning \$1,250 per month or less	19,576	22.2%
Workers Earning \$1,251 to \$3,333 per month	21,598	24.5%
Workers Earning More than \$3,333 per month	47,029	53.3%
Workers in the "Goods Producing" Industry Class	12,143	13.8%
Workers in the "Trade, Transportation, and Utilities" Industry Class	16,758	19.0%
Workers in the "All Other Services" Industry Class	59,302	67.2%

Source: U.S. Census Bureau, OnTheMap Application and LEHD Origin-Destination Employment Statistics (Beginning of Quarter Employment, 2nd Quarter of 2002-2020).

Home Destination Report - Where Workers Live Who are Employed in Anne Arundel County

- by Places (Cities, CDPs, etc.)



Total Primary Jobs

	2020	
	Count	Share
Total Primary Jobs	231,572	100.0%

**Jobs Counts by Places (Cities, CDPs, etc.) Where Workers Live - Primary Jobs
2020**

	Count	Share
Baltimore city, MD	19,166	8.3%
Glen Burnie CDP, MD	12,292	5.3%
Annapolis city, MD	7,436	3.2%
Severn CDP, MD	6,620	2.9%
Severna Park CDP, MD	6,432	2.8%
Pasadena CDP, MD	5,683	2.5%
Odenton CDP, MD	4,903	2.1%
Arnold CDP, MD	4,653	2.0%
Columbia CDP, MD	4,651	2.0%
Crofton CDP, MD	3,736	1.6%
Lake Shore CDP, MD	3,561	1.5%
Ellicott City CDP, MD	3,310	1.4%
Bowie city, MD	2,904	1.3%
Parole CDP, MD	2,836	1.2%
Dundalk CDP, MD	2,737	1.2%
Ferndale CDP, MD	2,612	1.1%
Riviera Beach CDP, MD	2,159	0.9%
Brooklyn Park CDP, MD	2,129	0.9%
Catonsville CDP, MD	2,106	0.9%
Washington city, DC	2,005	0.9%
Annapolis Neck CDP, MD	1,898	0.8%
Woodlawn CDP, MD	1,879	0.8%
Cape St. Claire CDP, MD	1,800	0.8%
Edgewater CDP, MD	1,788	0.8%
Linthicum CDP, MD	1,717	0.7%
Elkridge CDP, MD	1,580	0.7%
Essex CDP, MD	1,577	0.7%
Mayo CDP, MD	1,533	0.7%
Ilchester CDP, MD	1,532	0.7%
Arbutus CDP, MD	1,409	0.6%
Towson CDP, MD	1,308	0.6%
Bel Air South CDP, MD	1,241	0.5%
Maryland City CDP, MD	1,177	0.5%
Laurel city, MD	1,173	0.5%
Randallstown CDP, MD	1,172	0.5%
Middle River CDP, MD	1,151	0.5%
North Laurel CDP, MD	1,146	0.5%
Owings Mills CDP, MD	1,136	0.5%
Waldorf CDP, MD	1,103	0.5%
Milford Mill CDP, MD	1,050	0.5%
Shady Side CDP, MD	1,035	0.4%
South Laurel CDP, MD	1,009	0.4%
Germantown CDP, MD	996	0.4%
Frederick city, MD	966	0.4%
Eldersburg CDP, MD	958	0.4%
Stevensville CDP, MD	939	0.4%

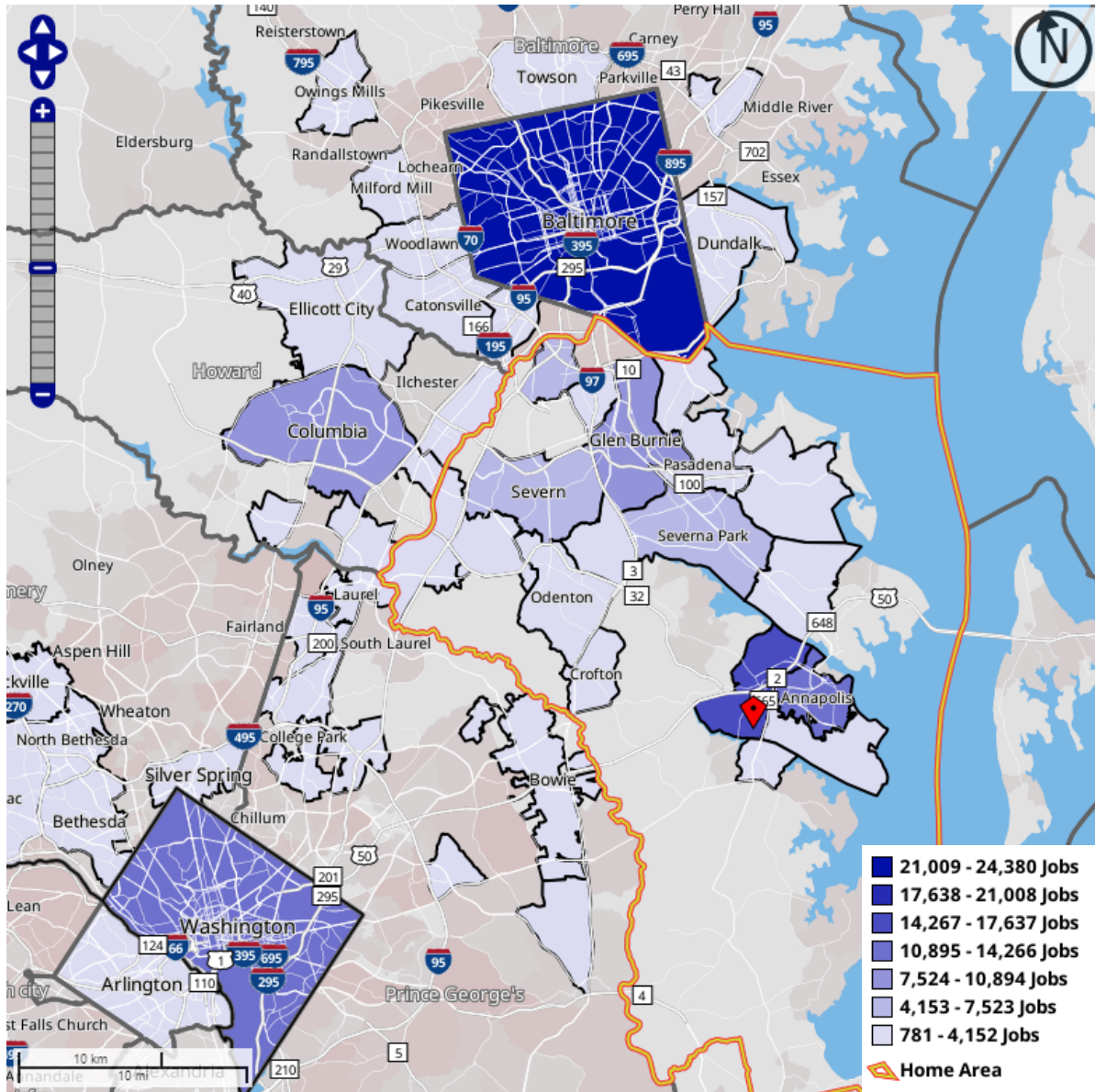
AAEDC Commuter Inflow/Outflow Report

Lochearn CDP, MD	932	0.4%
Perry Hall CDP, MD	890	0.4%
Deale CDP, MD	831	0.4%
Pikesville CDP, MD	811	0.4%
All Other Locations	91,904	39.7%

Source: U.S. Census Bureau, OnTheMap Application and LEHD Origin-Destination Employment Statistics (Beginning of Quarter Employment, 2nd Quarter of 2002-2020).

Work Destination Report - Where Workers are Employed Who Live in Anne Arundel County

- by Places (Cities, CDPs, etc.)



Total Primary Jobs

	2020	
	Count	Share
Total Primary Jobs	231,945	100.0%

Jobs Counts by Places (Cities, CDPs, etc.) Where Workers are Employed - Primary Jobs

	2020	
	Count	Share
Baltimore city, MD	24,380	10.5%
Parole CDP, MD	14,977	6.5%
Washington city, DC	13,231	5.7%
Annapolis city, MD	11,046	4.8%
Glen Burnie CDP, MD	9,679	4.2%
Columbia CDP, MD	9,611	4.1%
Linthicum CDP, MD	5,479	2.4%
Severna Park CDP, MD	4,842	2.1%
Severn CDP, MD	4,245	1.8%
Odenton CDP, MD	3,633	1.6%
Arnold CDP, MD	3,127	1.3%
Elkridge CDP, MD	2,691	1.2%
Jessup CDP, MD	2,679	1.2%
Pasadena CDP, MD	2,590	1.1%
Bowie city, MD	2,418	1.0%
Bethesda CDP, MD	2,161	0.9%
Towson CDP, MD	2,127	0.9%
Beltsville CDP, MD	2,024	0.9%
Rockville city, MD	1,915	0.8%
Ellicott City CDP, MD	1,912	0.8%
Woodlawn CDP, MD	1,879	0.8%
Crofton CDP, MD	1,871	0.8%
Arbutus CDP, MD	1,845	0.8%
College Park city, MD	1,740	0.8%
Ferndale CDP, MD	1,731	0.7%
Laurel city, MD	1,606	0.7%
Catonsville CDP, MD	1,596	0.7%
Fulton CDP, MD	1,497	0.6%
Arlington CDP, VA	1,426	0.6%
North Bethesda CDP, MD	1,422	0.6%
Edgewater CDP, MD	1,408	0.6%
Lake Shore CDP, MD	1,387	0.6%
Greenbelt city, MD	1,353	0.6%
Cockeysville CDP, MD	1,258	0.5%
Fort Meade CDP, MD	1,226	0.5%
Owings Mills CDP, MD	1,193	0.5%
Lake Arbor CDP, MD	1,143	0.5%
Silver Spring CDP, MD	1,112	0.5%
Gaithersburg city, MD	1,106	0.5%
Konterra CDP, MD	1,061	0.5%
Brock Hall CDP, MD	1,022	0.4%
Gambrills CDP, MD	1,012	0.4%
Dundalk CDP, MD	999	0.4%
Annapolis Neck CDP, MD	966	0.4%
Rossville CDP, MD	954	0.4%

AAEDC Commuter Inflow/Outflow Report

Milford Mill CDP, MD	938	0.4%
North Laurel CDP, MD	888	0.4%
Potomac CDP, MD	835	0.4%
Maryland City CDP, MD	826	0.4%
Frederick city, MD	781	0.3%
All Other Locations	69,097	29.8%

Source: U.S. Census Bureau, OnTheMap Application and LEHD Origin-Destination Employment Statistics (Beginning of Quarter Employment, 2nd Quarter of 2002-2020).

The Anne Arundel Economic Development Corporation serves as a resource for data about the county, its companies, and its business environment.

For more information, please contact:

Jonathan Boniface, Director of Research and Program Development
Anne Arundel Economic Development Corporation
2660 Riva Road, Suite 200, Annapolis, MD 21401
Phone: (410) 222-7410 | Fax: (410) 222-7415
Email: info@aaedc.org | Website: www.aaedc.org

Sincere efforts have been made to ensure the accuracy of the information contained in this report, but accuracy cannot be guaranteed.

All materials are available in alternative formats upon request.